

GREEN AUDIT REPORT 2022-23

RISHI BANKIM CHANDRA EVENING COLLEGE



Acknowledgement

Green Audit Assessment Team acknowledges the respected Principal, R.B.C. Evening College for assigning the task of Green Audit of this college to Department of Geography. We appreciate the cooperation that we got from Dr Debojyoti Halder (Dept. of Physics), Ms. Sumana Chandra (Dept of Film Studies), for providing photographs, all the other faculties for their constant support and students of Department of Geography during the entire process of the field work.



Students, Dept. of Geography counting tree species in the college

Report Prepared by

GREEN AUDIT TEAM

CONTENT

Sl No	Title	Page no
1.	Introduction	4
2.	Objectives	5
3.	About the college	5
4.	Vision and Mission statement	7
5.	Green audit	7
6.	Geographical location of the college	8
7.	Tree diversity of the college	10
8.	Faunal diversity	16
9.	Overall recommendations	17

INTRODUCTION

Green Audit is a process of systematic identification, quantification, recording, reporting and analysis of components of environmental diversity of any place or in this case, the college. It aims to analyse the environmental awareness, perception and attitudes in the working areas of the institute which will have a holistic footprint on the eco-friendly environment and sustainable future. Green audit is a way out to regulate and monitor the energy use, plant cover, suitable environment for existence of faunal diversity. It can inculcate among the stakeholders health consciousness and promote environmental awareness, values and ethics. If self-enquiry is a natural and necessary outgrowth of a quality education, it could also be stated that institutional self-enquiry is a natural and necessary outgrowth of a quality educational institution. Thus it is imperative that the college evaluate its own contributions toward a sustainable future. As environmental sustainability is becoming an increasingly important issue for the nation, the role of higher educational institutions in relation to environmental sustainability is more prevalent. The rapid urbanization and economic development at local, regional and global level has led to several environmental and ecological crises. On this background it becomes essential to adopt the system of the Green Campus for the institutes which will lead for sustainable development and at the same time reduce a sizable amount of atmospheric CO₂ from the environment. The National Assessment and Accreditation Council, New Delhi (NAAC) has made it mandatory that all Higher Educational Institutions should submit an annual Green Audit Report. Moreover, it is part of Corporate Social Responsibility of the Higher Educational Institutions to ensure that they contribute towards the reduction of global warming through carbon footprint reduction measures.

OBJECTIVES

The Green Audit by any institution is becoming relevant for self-valuation that will in turn reflects the motto of the institution in mitigating the environmental challenges. The institute is concerned about the sustainability of resource and preservation of environment from very beginning. The green audit is carried on to identify, quantify, describe and prioritize framework of Environment Sustainability in compliance with the applicable regulations, policies and standards. The principal objectives of Green Audit are:

1. To plot the co-ordinates of the college
2. To list out the floral and faunal diversity of the college
3. To document the climatic data of the location (Naihati) where the college is located
4. To document the waste disposal system
5. To estimate the energy requirement of the college
6. To suggest recommendation for sustainable usage of resource

ABOUT OUR COLLEGE



Entrance of our college

Our College is a Government-aided Institution of graduate studies enjoying accreditation conferred by NAAC. The College offers courses in B.A., B. Com. and B.Sc. named after the celebrated litterateur Rishi Bankim Chandra Chattopadhyay and situated close to his birth place, the college caters to the needs of higher education of the districts of North 24 Parganas and adjoining Nadia and Hooghly. As a centre of higher studies, this institution acts both as an upholder of academic values and as a contributor towards social and economic empowerment of the young people in the neighborhood. By imparting graduate education in Arts, Commerce and Science, the College has proved its enduring concern for society at large over sixty years. The College now has plans to embark on extension programs, and so has constructed a new four- storied building to add excellence to the existing machinery.



Open space surround by trees

THE LOGO

The Logo of the College bears the mention of the year 1947 in it to indicate the year of foundation when the undivided college was started in the evening time, and later, in 1984, Rishi Bankim Chandra Evening College emerged out of the parent institution. The seven-leaf Deodar bough in the Logo symbolizes the ‘Saptaparni’ traditionally offered to successful students with the conferring of degree by traditional Indian Viswa Vidyalaya.

VISION AND MISSION STATEMENT

VISION

The vision of the institution is to disseminate higher education to the vast multitude of students coming out of the schools of adjoining areas spread over the districts of North 24 Pgs, Nadia and Hooghly. The college aspires to become a catalyst of knowledge and also to make the young folk capable of sustaining themselves economically and meaningfully thereby contributing to the broad economic and social development.

MISSION

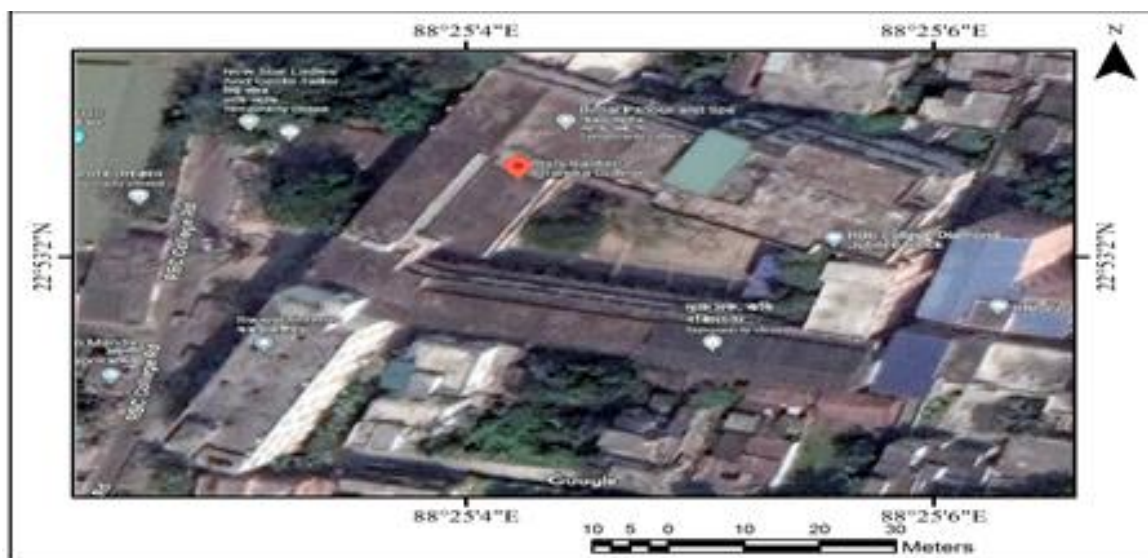
1. To achieve excellence in higher education, empowerment through knowledge and sustainable development.
2. To ensure innovations in teaching-learning, research and community service activity.
3. To make an optimum use of human and limited infrastructural facilities.
4. To encourage women's education and empowerment.
5. To inculcate and promote a scientific attitude and an awareness about human rights, social values, culture and environment.

GREEN AUDITING:

The institute pledges to offer the 'Green Campus' to the students and stakeholders through environmental conservation and sustainability. The principal components adopted are zero environmental foot print, graduates demonstrating environmental awareness and creation of healthy and sustainable eco-space. The aim is to conserve energy by reducing CO₂ emission, efficient use of water resources in campus, while creating a conducive atmosphere where students can unlearn and learn and be dynamic.

GEOGRAPHICAL LOCATION WITH CAMPUS MAP IN SCALE

The college is located in historic city of Naihati which is a of North 24 Parganas district in the Indian state of West Bengal. Naihati Municipality is one of the oldest in the whole country and was established in 1869. The relevance of the place is immense in freedom movement of the country as it is the birthplace of Bankim Chandra Chattopadhyay, the author of India's national song Vande Mataram.



Aerial view of the college

From the inception of the college an eco-friendly environment is thrived for. It has a long legacy of healthy environmental practices including episodic plantation, their monitoring and nurturing. About 40% of the total area of the campus of the college is dominated by open spaces and plantation that generates a healthy and green campus.

A survey was carried out to find plant diversity in the college campus of R.B.C. Evening College, Naihati. The survey was focused on the diversity of plants on the basis of their classification and economic importance.

Table: Details of some species around college campus

Sl no	Name of tree	Scientific name	Number	Use
1.	Areca Nut	<i>Areca catechu</i> <i>L.</i>	16	1. Beautification and fencing 2. Protection from soil erosion
2	Monoon longifolium	Polyalthia longifolia	11	1. The wood is used for various purposes including making drums, pencils, small boxes and matches. Bark of this tree contains medicinal properties, which is used as a febrifuge.
3	Mahagony	Swietenia macrophylla	3	1. Mahogany is commonly used for furniture joinery, flooring veneers and musical instruments
4.	Mango	Magnifera indica	1	1. Herb in the ayurvedic and indigenous medical system
5	Shimul	Bombax Ceiba	1	1. Cotton 2. Bark is used for medicine in Yunani 3. Source of natural red colour
6	Guava	Psidium guajava	1	1. Food and folk medicine
7	Jackfruit	Artocarpus heterophyllus	1	1. Food and medicine
8.	Bamanhati	Clerodendrum indicum	8	1. Medicinal use in folk and local tradition

TREE DIVERSITY IN THE CAMPUS













FAUNAL DIVERSITY IN THE CAMPUS



Fluvous breasted woodpecker



Crow



Lizard



Rat



Sparrow

RECOMMENDATIONS

- 1.** Energy Consumption for each building should be estimated to design the energy conservation plan.
- 2.** Energy saving awareness shall be done by displaying the boards at appropriate places.
- 3.** Energy saving can be done adopting measures like installation of solar panels, LED lights etc.
- 4.** The selection of plant species having medicinal and herbal values can be done.
- 5.** A Compost pit can be installed in the campus so that manures for the plants can be formed.
- 6.** Artificial nests and water ponds are recommended to attract different birds in their migrating and breeding season.
- 7.** Rain Water Harvesting (RWH) can be done technically.